



DEFENDER

The Defender is an independent Leg Cantilever Jack-Up with operational history in Asia and the Gulf of Mexico.



GENERAL (U.S.)

Built	2007 Keppel AmFELS
Design	LeTourneau Super 116C Independent Leg Cantilever
Flag/Class	Singapore / ABS
Helideck	S61N & S92
Accommodations	102 Persons
Dimensions	243 ft Long / 206 ft Wide / 26 ft Deep
Draft	16 ft Transit
Displacement	25,800 st at Loadline
Variable Load	2,217 st Transit / 3,007 st Drilling
Max. Drilling Depth	30,000 ft
Max. Water Depth	Up To 350 ft
Legs	3 x 477 ft Square Truss / 420 ft Useable Below Hull
Leg Spacing	142 ft Transverse / 129 ft Longitudinal
Spudcans	46 ft Diameter
Jacking System	LeTourneau 16 x Pinions / Leg
Mooring Winches	2 x NOV Amclyde JU-36 50 HP 25 st Pull
Mooring Lines	2 x 2,000 ft 1-1/2" Diameter IWRC
Anchors	2 x Flipper Delta 5.51 st

STORAGE CAPACITIES

Fuel	2,024 bbl
Drill Water	11,300 bbl
Potable Water	1,658 bbl
Active/Reserve Liquid Mud	3,046 bbl
Base Oil	1,124 bbl
Brine	800 bbl
Bulk Bentonite / Barite	6,400 ft ³
Bulk Cement	4,800 ft ³
Sack Storage	5,000 Sacks

DRILLING PACKAGE

Cantilever Envelope	70 ft x 30 ft
---------------------	---------------

Derrick	NOV Drecto 170 ft Tall with 32 ft x 35 ft Base 964.3 st Gross Nominal Capacity
Top Drive	NOV TDS-8SA Rated for 750 st Hoisting Capacity Max. Continuous Torque 62,500 ft-lbs
Drawworks	National 1625 UBDE w/ 1-5/8" Drill Line Max. Line Pull 12 Lines of 862.5 st
Rotary Table	NOV-495, 49.5" Max. Opening
Tubular Handling	NOV st-120 Iron Roughneck
Mud Pumps	3 x LEWCO w-2214, 2,200 HP
HP Mud System	Rated for 7,500 psi
Shale Shakers	4 x Quad VSM 300

POWER

Main Engines	4 x Caterpillar 3516B HD 2,150 HP Diesel Engines
Main Generators	4 x Baylor 2,011 HP
Emergency Power	1 x Caterpillar 3516B Hd 2,150 HP Diesel Engine (Separate From 4 Main Engines)

WELL CONTROL

BOP (LP)	Cameron Type U 21-1/4" 3 x RAM 2,000 psi 1 x Shaffer Spherical Annular 21-1/4" 2,000 psi
BOP (HP)	Cameron Type U 13-5/8" 4 x RAM 15,000 psi 1 x Shaffer Spherical 13-5/8" 10,000 psi
Diverter	1 x Shaffer Spherical 30" 1,000 psi
BOP Handling	2 x Ingersoll-Rand 82.6 st Hoist
Choke & Kill Manifold	WOM 15,000 psi
Conductor Tensioning	Hydraulic Aqualink 300F 4 x Lift Points Total Tension 150 st

CRANES

Primary Cranes	1 x LeTourneau PCM120ss 120 ft Boom Rated for 41.6 st at 25 ft Radius, Port FWD 2 x LeTourneau PCM120ss 100 ft Boom Rated for 49.2 st at 22 ft Radius, Port AFT, STBD AFT
X-Mas Tree Handling	2 x Ingersoll-Rand 82.6 st Hoist

Further information: +52 938 120 24 23

The above information is intended for general reference only. All equipment and specifications are subject to change at any time. Revised September 8th, 2023.



DEFENDER

The Defender is an independent Leg Cantilever Jack-Up with operational history in Asia and the Gulf of Mexico.



GENERAL (U.S.)

Built	2007 Keppel AmFELS
Design	LeTourneau Super 116C Independent Leg Cantilever
Flag/Class	Singapore / ABS
Helideck	S61N & S92
Accommodations	102 Persons
Dimensions	74.1 m Long / 62.8 m Wide / 7.9 m Deep
Draft	4.9 m Transit
Displacement	23,412 mt at Loadline
Variable Load	2,012 mt Transit / 2,729 mt Drilling
Max. Drilling Depth	9,144 m
Max. Water Depth	Up to 106.7 m
Legs	3 x 145.4 m Square Truss / 128 m Useable Below Hull
Leg Spacing	43.3 m Transverse / 39.3 m Longitudinal
Spudcans	14 m Diameter
Jacking System	LeTourneau 16 x Pinions/Leg
Mooring Winches	2 x NOV Amclyde Ju-36 67 kW 22.7 mt Pull
Mooring Lines	2 x 609.6 m 38.1 mm Diameter IWRC
Anchors	2 x Flipper Delta 5 mt

STORAGE CAPACITIES

Fuel	322 m ³
Drill Water	1,797 m ³
Potable Water	264 m ³
Active/Reserve Liquid Mud	484 m ³
Base Oil	179 m ³
Brine	127 m ³
Bulk Bentonite / Barite	181 m ³
Bulk Cement	136 m ³
Sack Storage	5,000 Sacks

DRILLING PACKAGE

Cantilever Envelope	21.3 m x 9.1 m
---------------------	----------------

Derrick	NOV Drecto 39.6 m Tall with 9.8 m x 10.7 m Base 875 mt Gross Nominal Capacity
Top Drive	NOV TDS-8SA Rated for 680.6 mt Hoisting Capacity Max. Continuous Torque 84,739 nm
Drawworks	National 1625 UBDE w/41.275 mm Drill Line Max Line Pull 12 Lines of 782.7 mt
Rotary Table	NOV-495, 1.257 M Max Opening
Tubular Handling	NOV st-120 Iron Roughneck
Mud Pumps	3 x LEWCO w-2214, 1640.53 kW
HP Mud System	Rated for 517 Bar
Shale Shakers	4 x Quad VSM 300

POWER

Main Engines	4 x Caterpillar 3516B HD 1,603 kW Diesel Engines
Main Generators	4 x Baylor 1,500 kW
Emergency Power	1 x Caterpillar 3516B Hd 1,603 kW Diesel Engine (Separate From 4 Main Engines)

WELL CONTROL

BOP (LP)	Cameron Type U 53.975 cm 3 x RAM 138 Bar 1 x Shaffer 1 x Shaffer Spherical 53.975 cm 138 Bar
BOP (HP)	Cameron Type U 34.6075 cm 4 x RAM 1,034 Bar 1 x Shaffer Spherical 34.6075 cm 689 Bar
Diverter	1 x Shaffer Spherical 76.20 cm 69 Bar
BOP Handling	2 x Ingersoll-Rand 75 mt Hoist
Choke & Kill Manifold	WOM 15,000 Psi
Conductor Tensioning	Hydraulic Aqualink 300F 4 x Lift Points Total Tension 136 mt

CRANES

Primary Cranes	1 x LeTourneau PCM120ss 36.6 m Boom Rated for 37.8 mt at 7.6 m Radius, Port FWD 2 x LeTourneau PCM120ss 30.5 m Boom Rated for 44.6 mt at 6.7 m Radius, Port AFT, STBD AFT
X-Mas Tree Handling	2 x Ingersoll-Rand 75 mt Hoist

Further information: +52 938 120 24 23

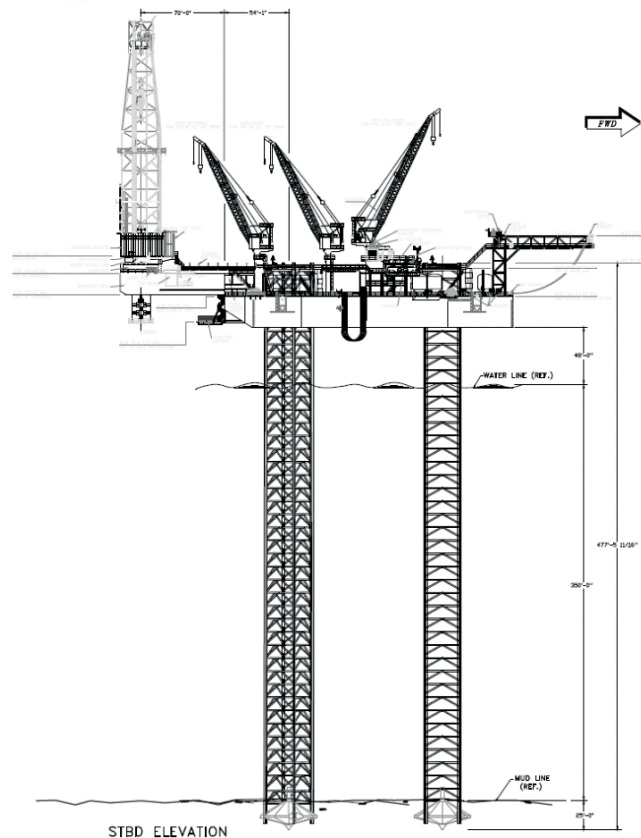
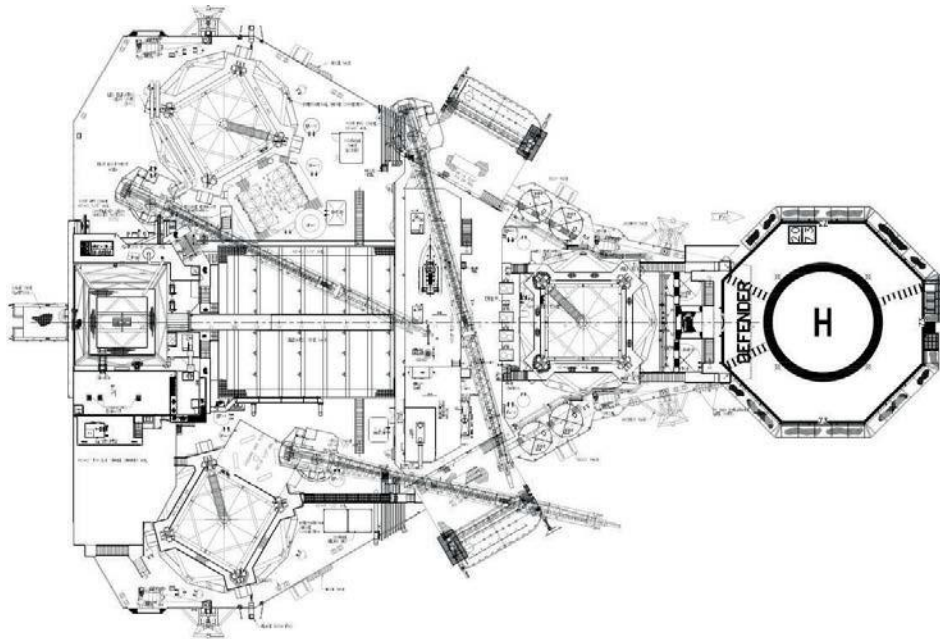
The above information is intended for general reference only. All equipment and specifications are subject to change at any time. Revised September 8th, 2023.



FONTIS
ENERGY

DEFENDER

The Defender is an independent Leg Cantilever Jack-Up with operational history in Asia and the Gulf of Mexico.



Further information: +52 938 120 24 23

The above information is intended for general reference only. All equipment and specifications are subject to change at any time. Revised September 8th, 2023.